



APH Transcriber Training Using NIMAS Files & Duxbury/NimPro Session 2

The Importance of Using NimPro with Duxbury



NimPro and Duxbury

In this session:

- By opening a NIMAS file in Duxbury, you'll see that Duxbury can not unpack all the formats/codes. Instead, using NimPro first will unpack everything, including format, page change indicators, etc.
- When using the NimPro program correctly, about 70% of the work is completed for you.
- The primary thing the transcriber will need to do will be to add t and p pages.
- The transcriber will then need to go through the file to correct any errors.



LEARNING OBJECTIVES:

- **Identify** NimPro and Duxbury tools for setting up initial formatting of a text, including transcriber-generated pages.
- **Identify** common issues when working with Duxbury conversions.
- **Describe** how to set Document settings for transcription.



Duxbury's Will Dos With NimPro and Will Nots Without NimPro: The Will Nots



NIMAS & DUXBURY (DBT)

Main Issues regarding NIMAS & DUXBURY:

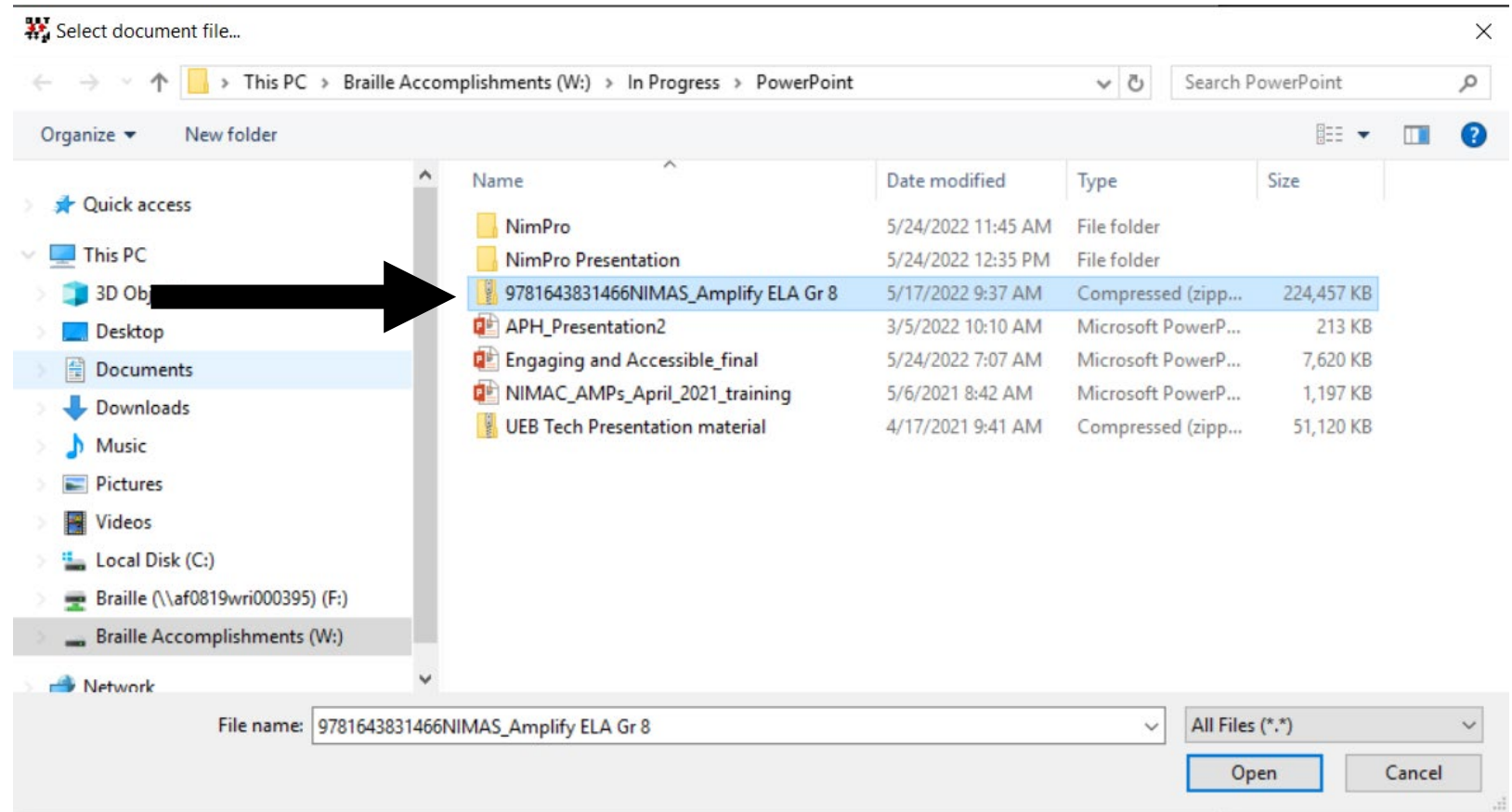
- DBT can open a NIMAS .XML file, but not the zipped package. The resulting file is too large for Duxbury to use efficiently.
- DBT cannot process the visual graphics.
- DBT does NOT recognize all NIMAS files.
- DBT cannot directly import any of the nested structures in NIMAS files, e.g. lists.



Opening a NIMAS file in Duxbury

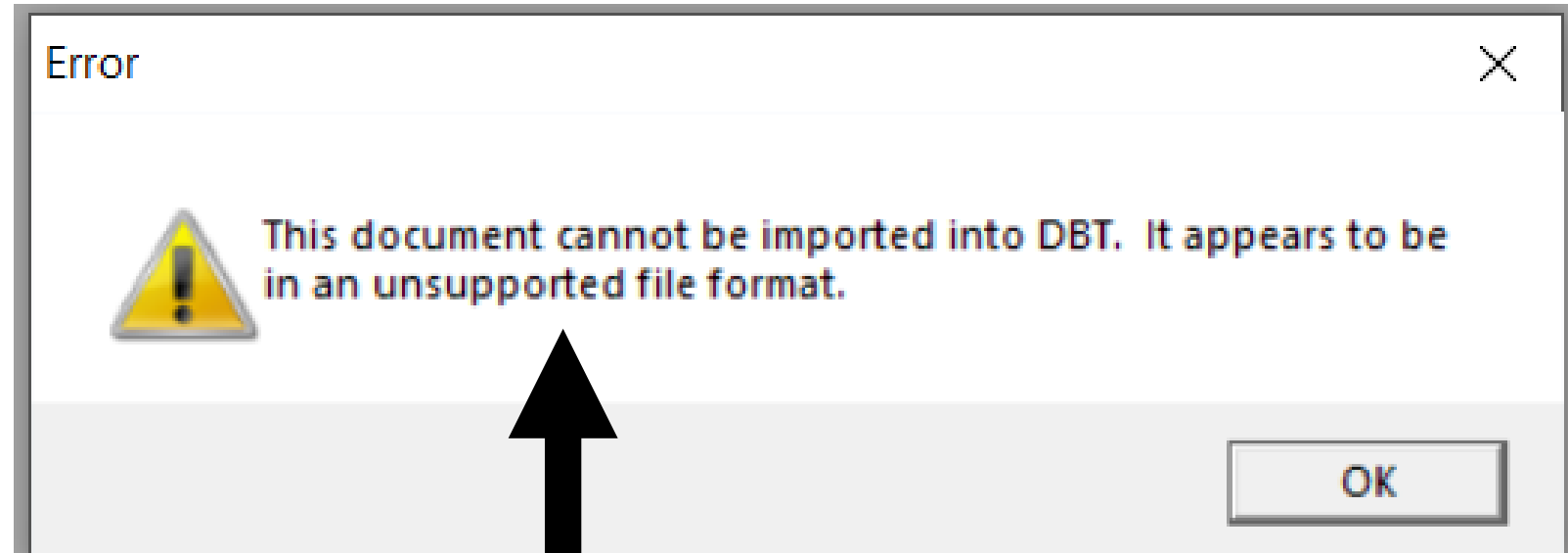
Issue:

- Opening a Zipped file using Duxbury.



Opening a NIMAS file in Duxbury (cont.)

- The error in this file occurred because the document cannot be imported.



Opening a NIMAS File using Duxbury:

There is another way to open the NIMAS file into Duxbury; however, the file still ***cannot*** be imported correctly. You can still open a NIMAS file in Duxbury when extracted from the zip file.



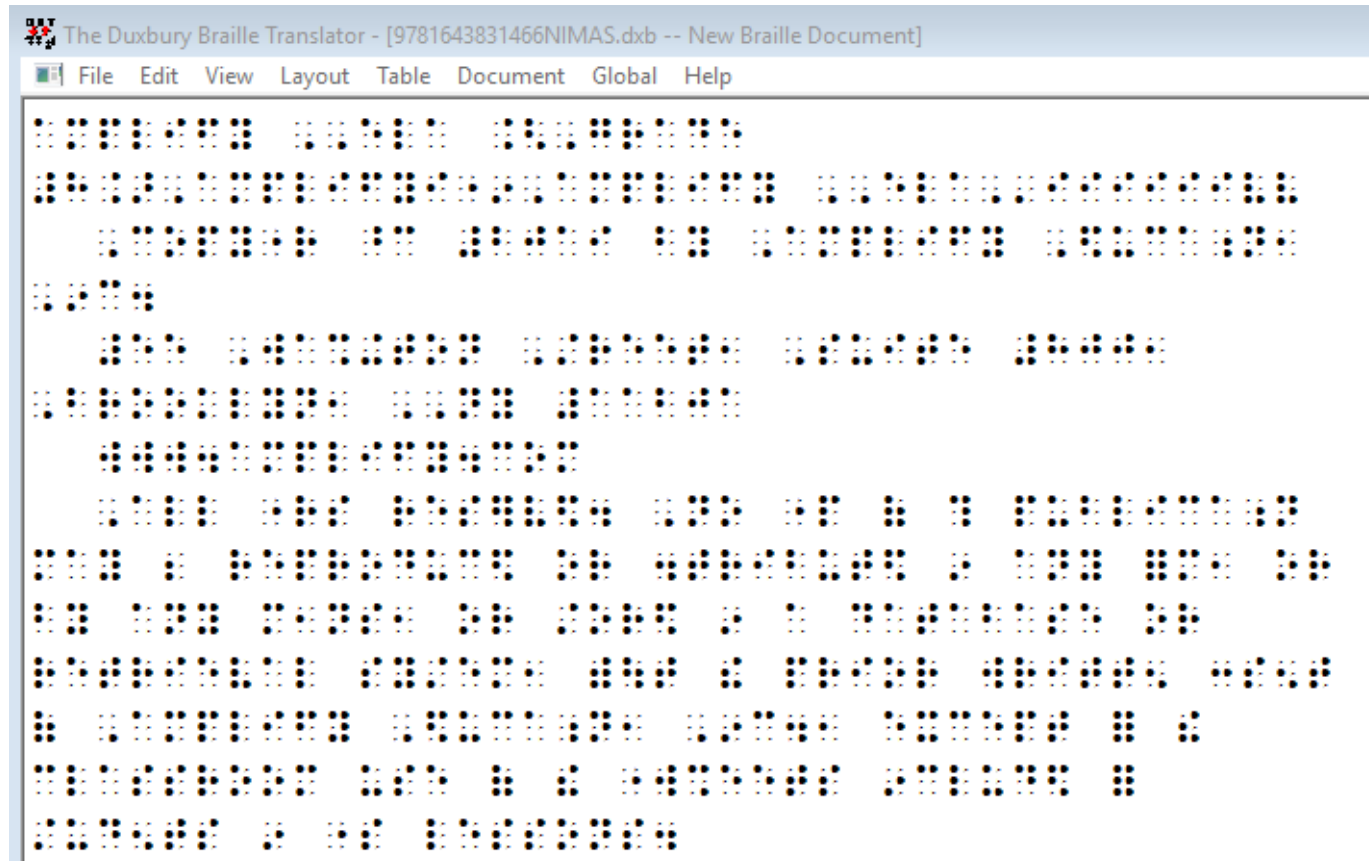
Problems with Opening File in Duxbury:

Parts of the file do not open.

You can still work within this file, yet there is too much to correct and complete. And, it would waste an ample amount of your time and energy.



Straight Duxbury Conversion



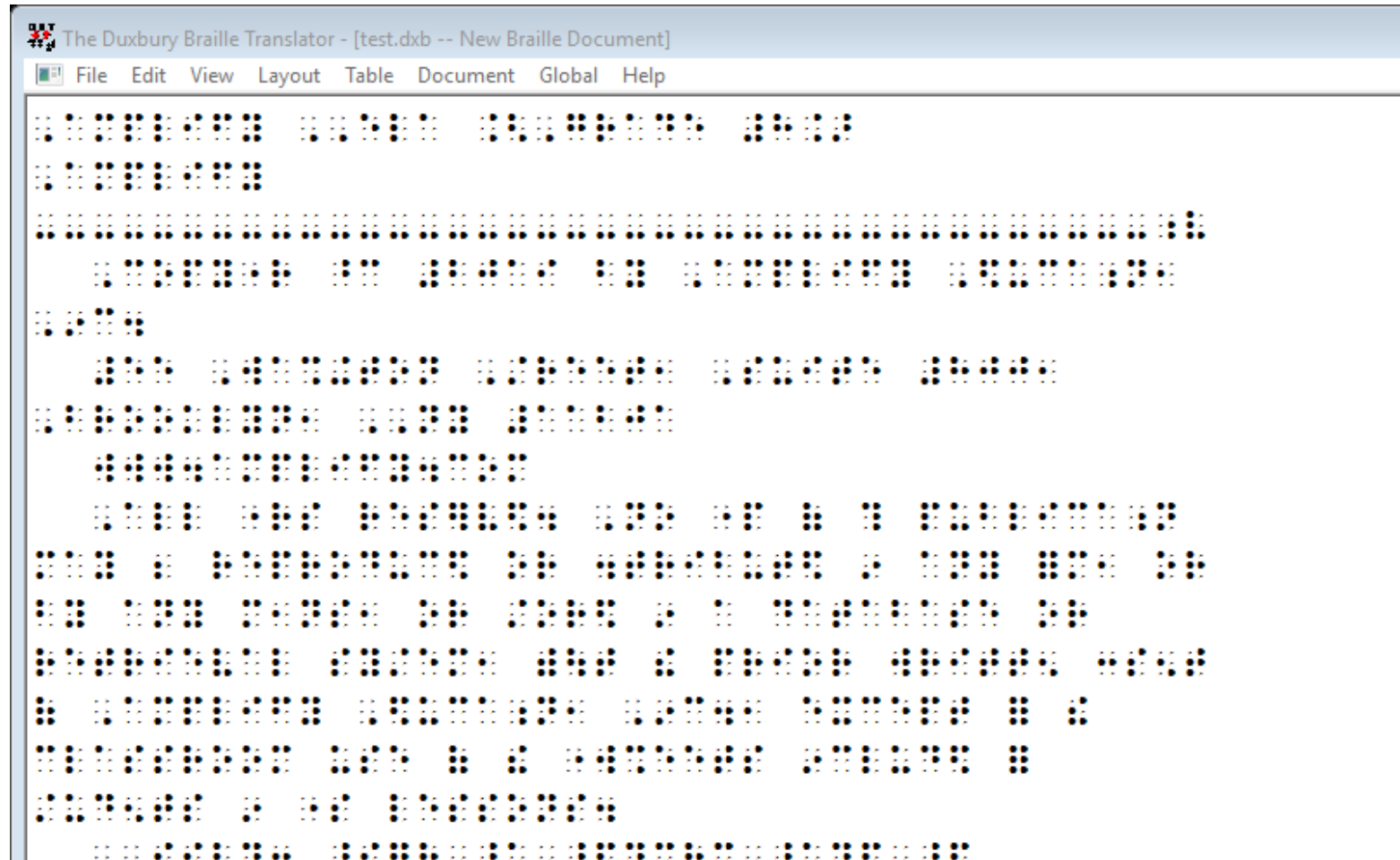
An Incorrect Conversion

The previous slide showed that:

- Multiple formatting issues occurred and would have to be corrected.
- These issues can cause the transcriber to lose time and correcting them creates unneeded work.
- The following slide shows NimPro converted Duxbury file.



A NimPro/Duxbury Conversion



The Will Do's



What NimPro Does

- Directly reads NIMAS files. NIMAS files can be huge and loaded with graphics. You can start the preparation of these files for braille using NimPro.
- Exports to files for DBT ready for braille production.
- Exports to Microsoft Word documents with BANA Styles (Braille-ready styles) included as an interim format to import to DBT.



What NimPro Does (Cont.)

- Contains automated "wizards" to convert inconvenient and inappropriate text styles into styles that facilitate correct Braille, applied at the user's direction to selected pages or sections.
- Contains style editing commands to allow format changes to individual text elements.



Why NimPro?

- **NimPro** is a tool used for conversion.
- **NimPro** is a bridge between NIMAS files and the braille translation software, Duxbury (DBT).
- **NimPro** facilitates file imports to DBT.
- Simply put, **NimPro** makes transcribing a textbook more efficient and time saving.



Working with a NimPro Converted File in Duxbury



Getting to Duxbury

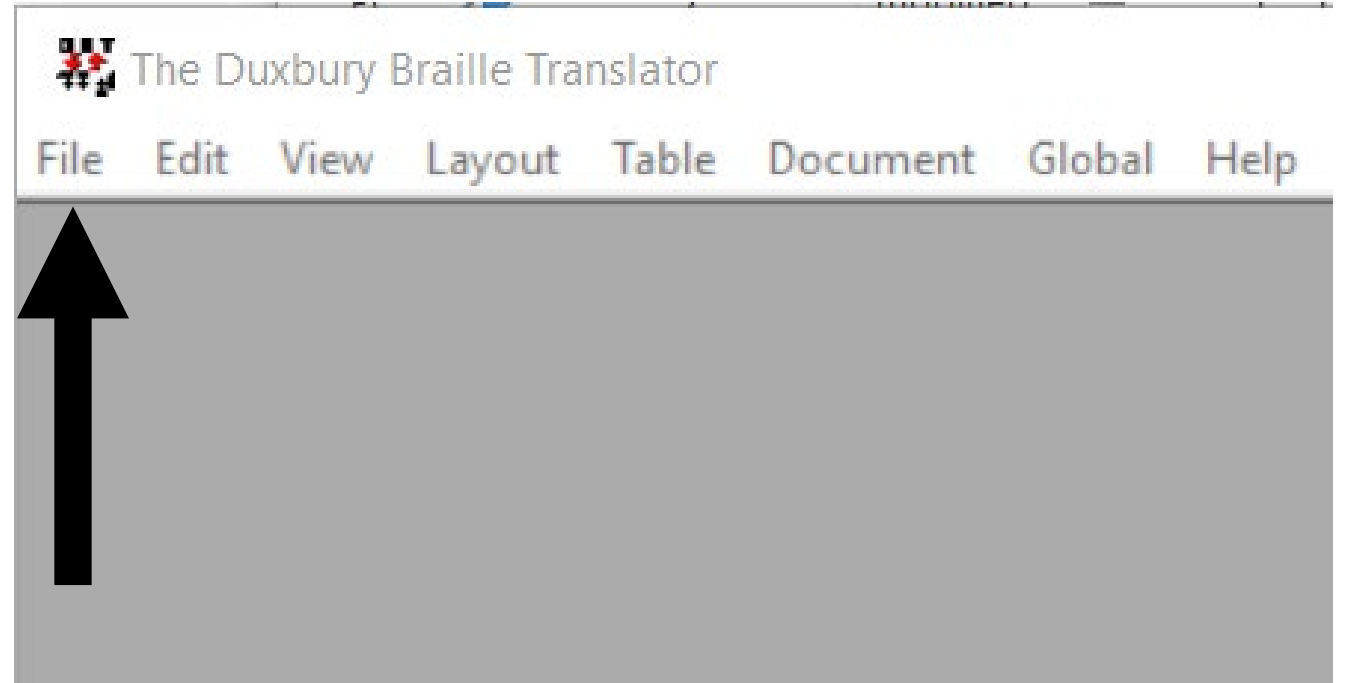
- In the previous presentation you learned how to export a NimPro file to DBT Document.
- You also learned how to select the BANA template and convert to Duxbury.



Setting up a document in Duxbury

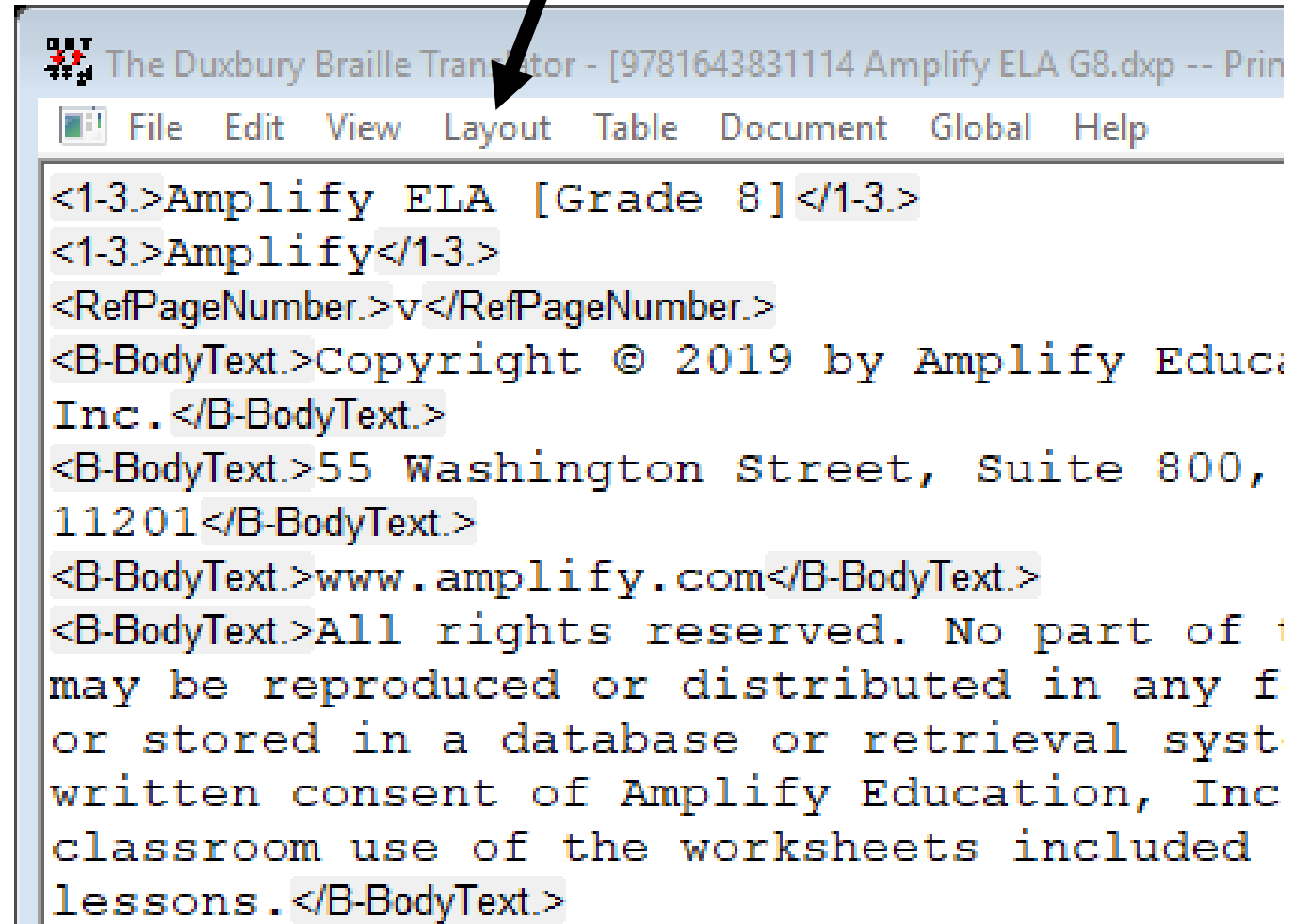
From NimPro you can save directly into Duxbury with all formats intact.

At this point, Launch Duxbury and from the Open tab and open the Duxbury file that you created from NimPro.



Working in Duxbury:

- Layout: Under the Layout tab, you'll find the Apply Styles command.

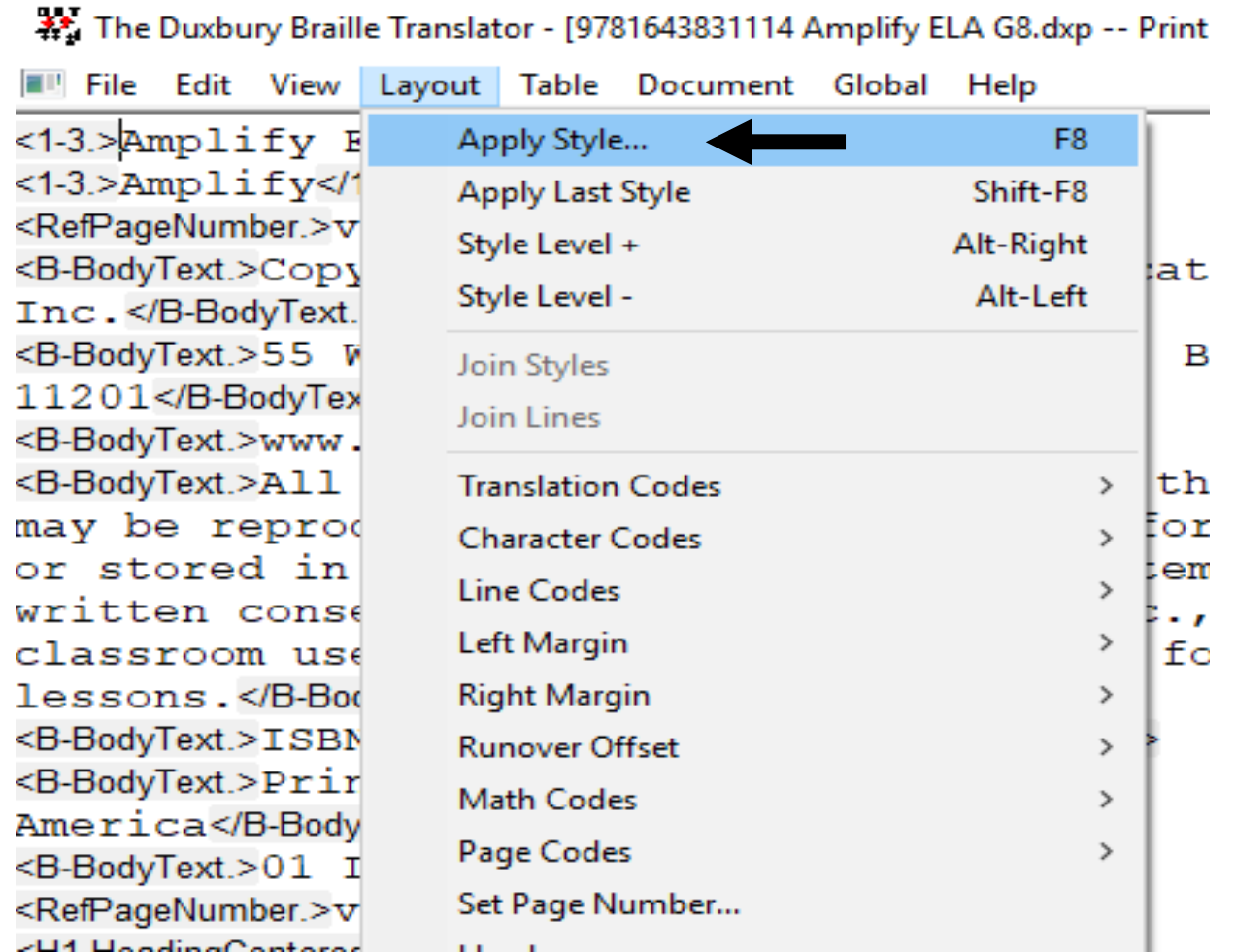


```
<1-3.>Amplify ELA [Grade 8]</1-3.>  
<1-3.>Amplify</1-3.>  
<RefPageNumber.>v</RefPageNumber.>  
<B-BodyText.>Copyright © 2019 by Amplify Educa  
Inc.</B-BodyText.>  
<B-BodyText.>55 Washington Street, Suite 800,  
11201</B-BodyText.>  
<B-BodyText.>www.amplify.com</B-BodyText.>  
<B-BodyText.>All rights reserved. No part of t  
may be reproduced or distributed in any f  
or stored in a database or retrieval syst  
written consent of Amplify Education, Inc  
classroom use of the worksheets included  
lessons.</B-BodyText.>
```



Working in Duxbury: (cont.)

- **Apply Styles:** Here you can begin making the format changes as needed.



Adding the t pages



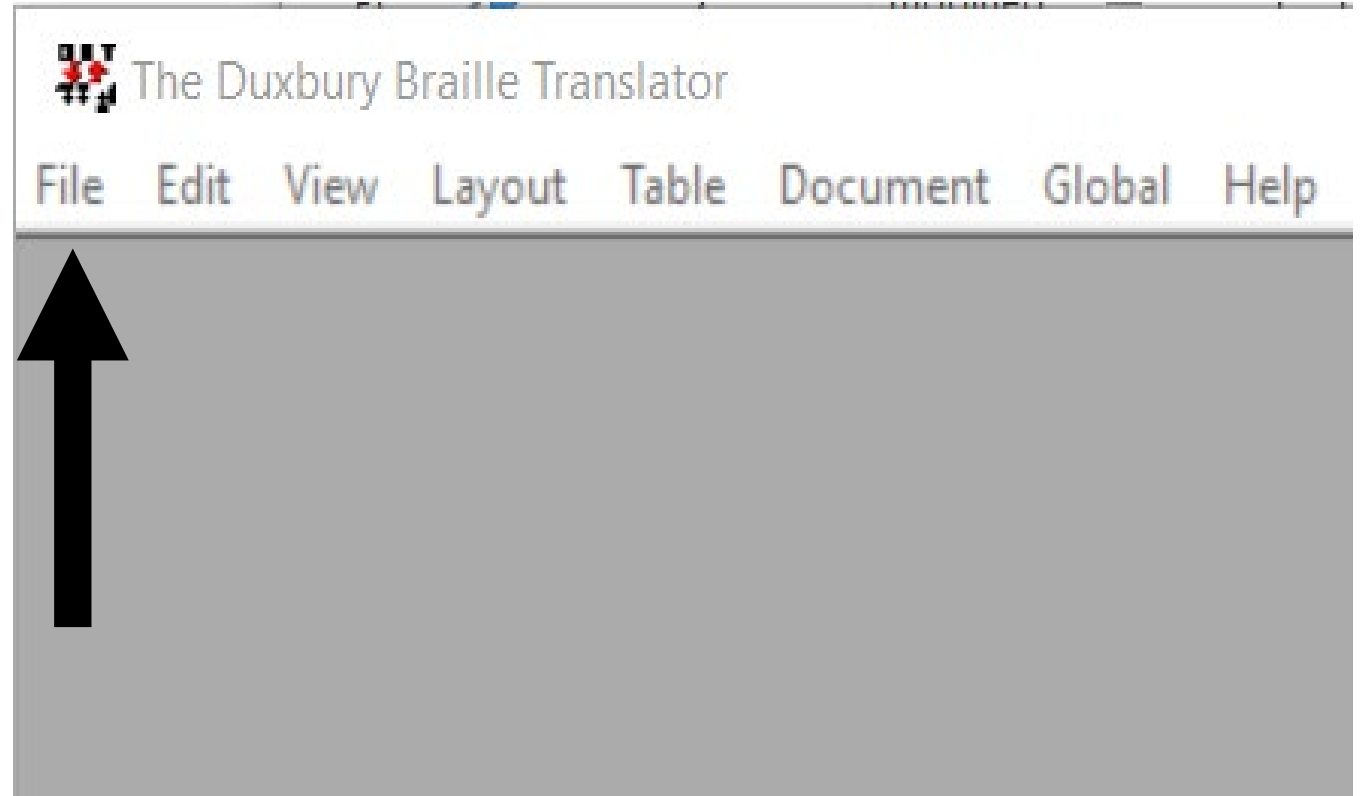
Setting Transcriber-Generated Pages

- If you are working in Duxbury you will need to learn how to utilize the codes to accomplish your work. For example, setting up a transcriber-generated page.



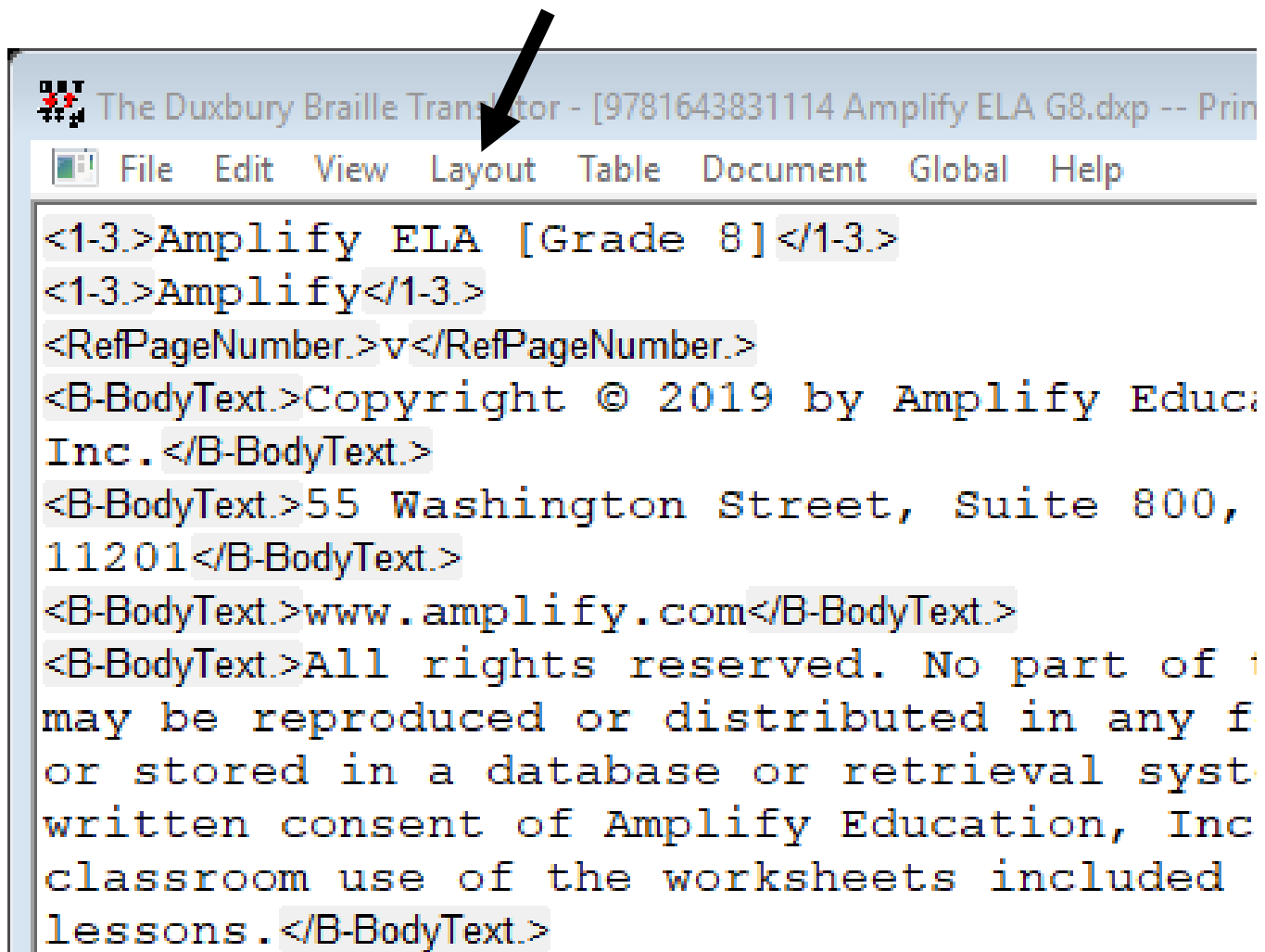
Apply Styles:

- Launch Duxbury
- Open the file that needs the t-pages formatted.



Apply Styles: (continued)

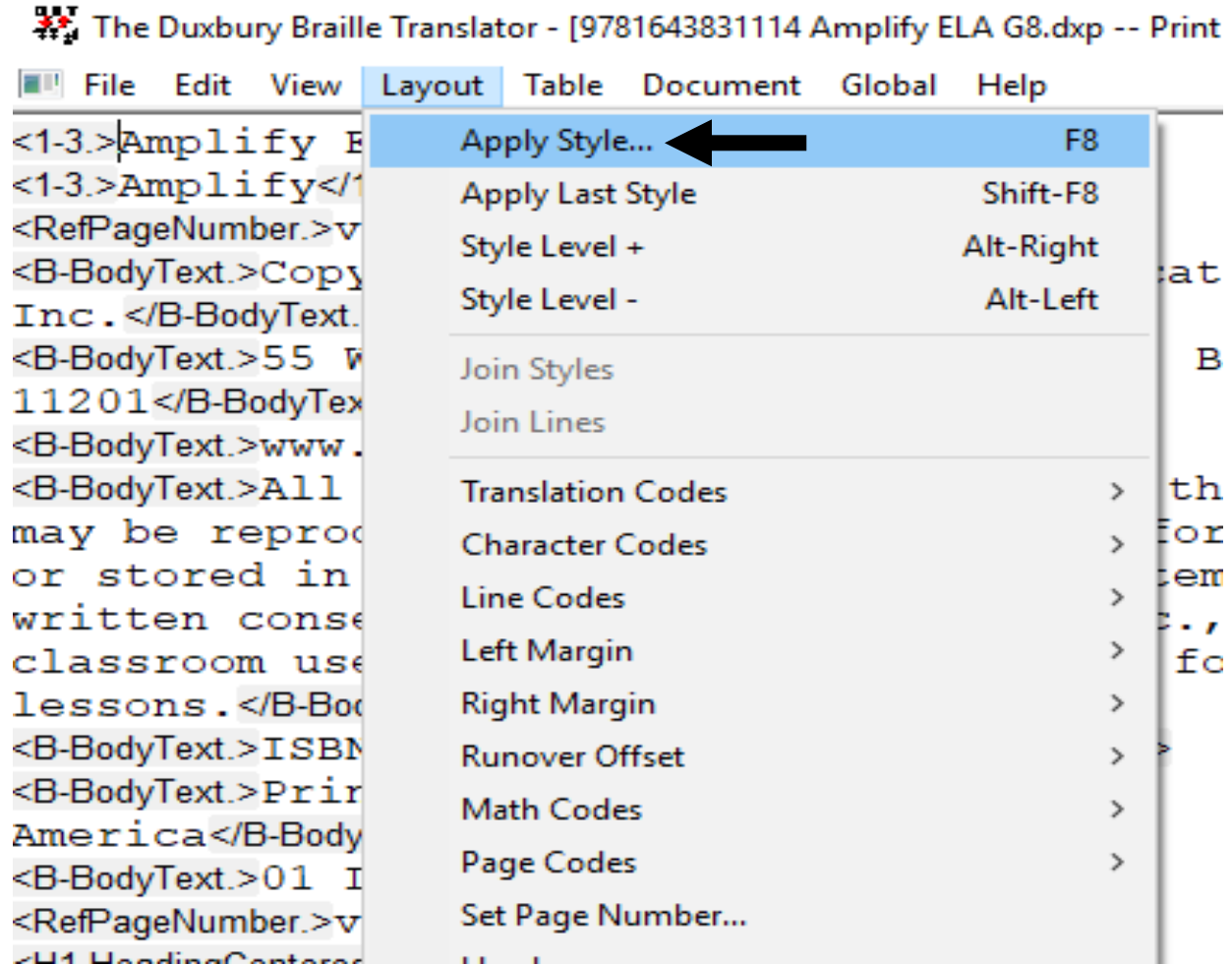
- Click the Layout Tab



```
The Duxbury Braille Translator - [9781643831114 Amplify ELA G8.dxp -- Print  
File Edit View Layout Table Document Global Help  
<1-3.>Amplify ELA [Grade 8]</1-3.>  
<1-3.>Amplify</1-3.>  
<RefPageNumber.>v</RefPageNumber.>  
<B-BodyText.>Copyright © 2019 by Amplify Educa  
Inc.</B-BodyText.>  
<B-BodyText.>55 Washington Street, Suite 800,  
11201</B-BodyText.>  
<B-BodyText.>www.amplify.com</B-BodyText.>  
<B-BodyText.>All rights reserved. No part of t  
may be reproduced or distributed in any f  
or stored in a database or retrieval syst  
written consent of Amplify Education, Inc  
classroom use of the worksheets included  
lessons.</B-BodyText.>
```

Apply Styles: (cont.)

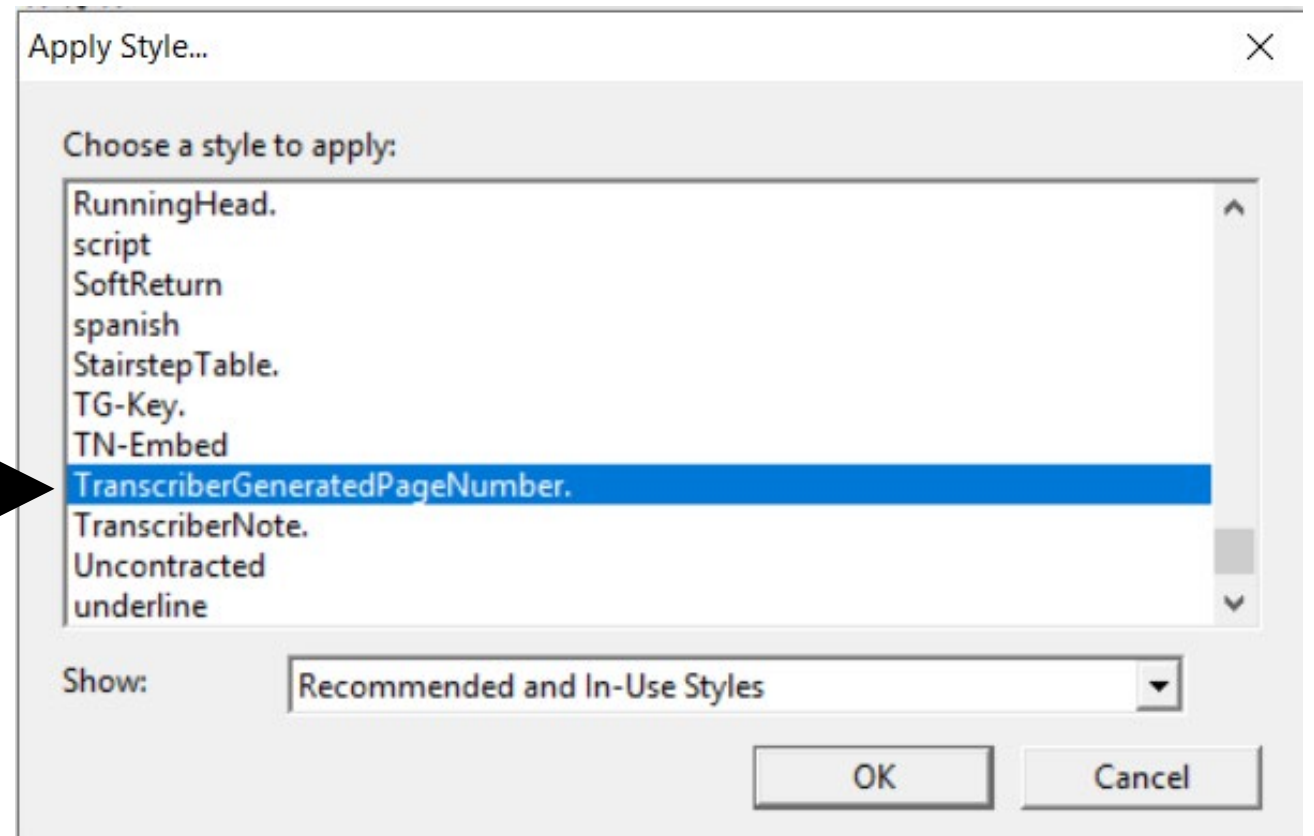
- Select *Apply Styles*



Apply Styles: (cont.)

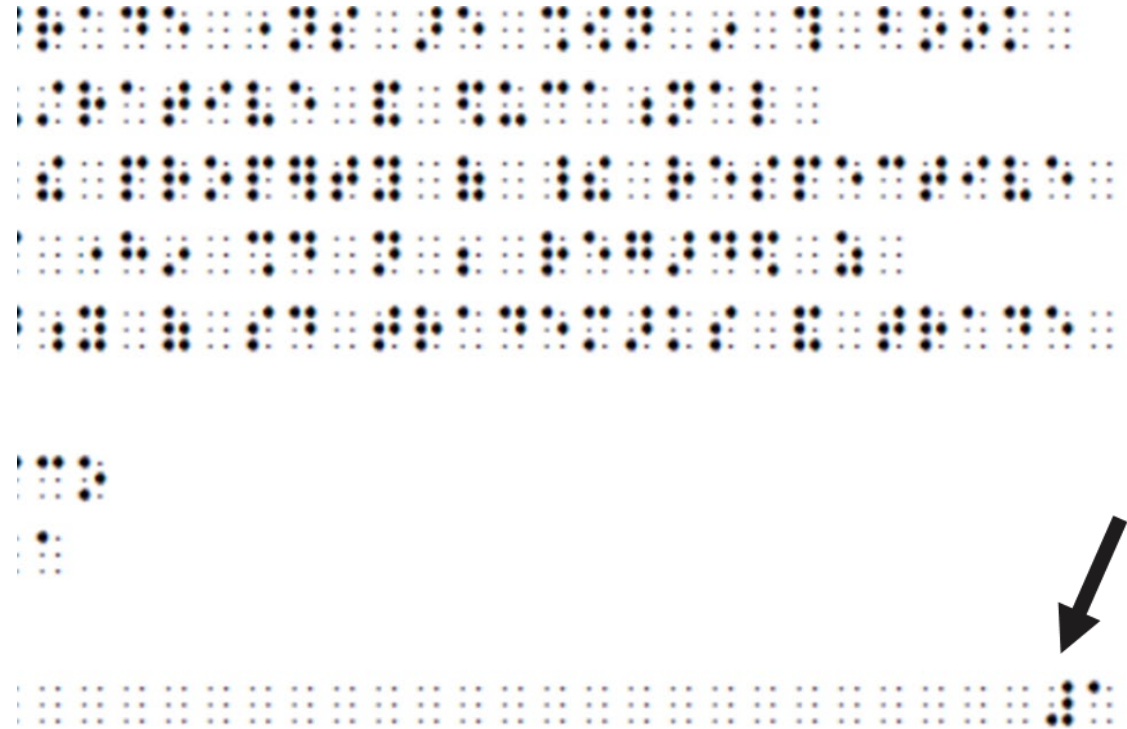
It will allow you to insert your code to Duxbury

- After entering the *Apply Styles* menu, select the Transcriber-Generated Page Number for the code to set your T-pages.



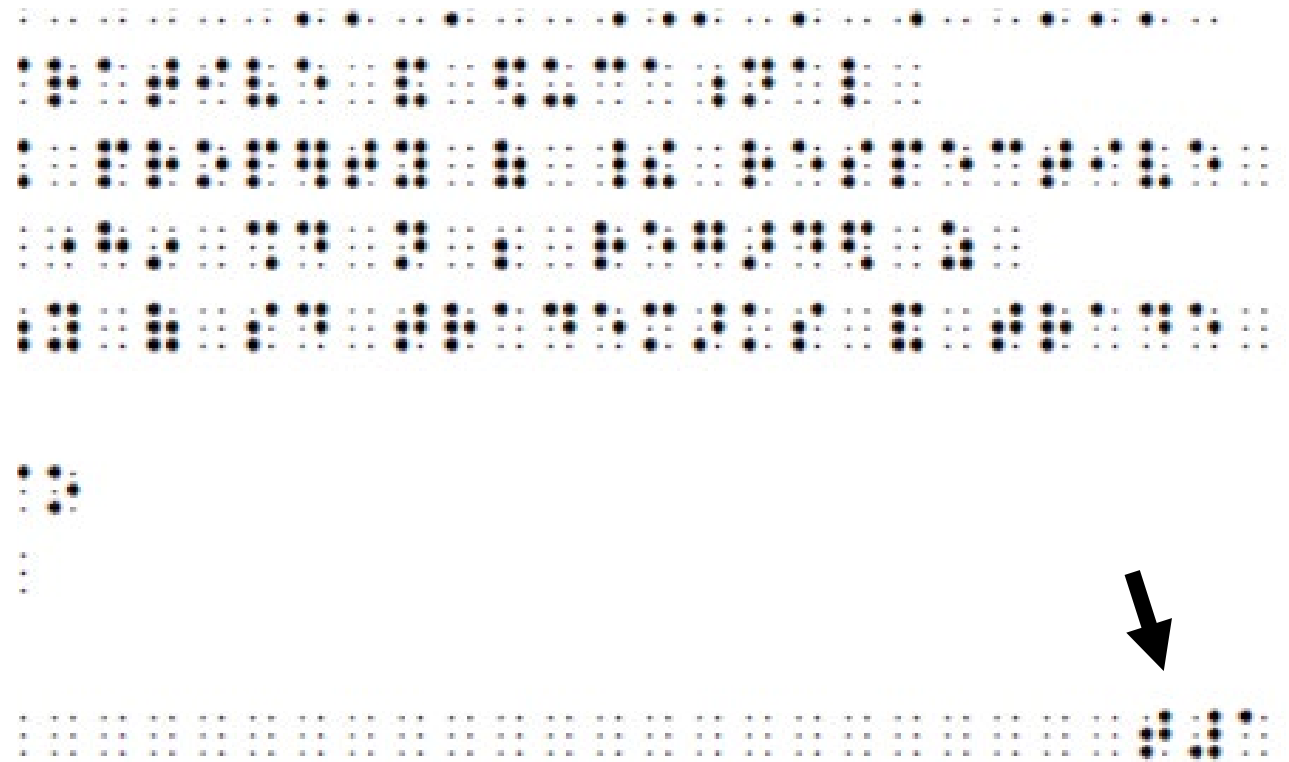
Applying the T-pages to Your Document:

- **Before:** You can see that the braille page number is set at 1



Applying the T-pages to Your Document: (cont.)

- **After:** You now see the t page numbers have been set.
- You can apply any style (list, headings etc...) to your Duxbury Document by following this example.



Q & A

